

JURISDICTIONAL ANNEX

Section 4. Town of Yountville

NAPA COUNTY OPERATIONAL AREA HAZARD MITIGATION PLAN

NAPA COUNTY OFFICE OF EMERGENCY SERVICES
1195 THIRD STREET B-20
NAPA, CA 94559





4.1 Purpose

This Annex details the hazard mitigation planning elements specific to the Town of Yountville. This Annex is not intended to be a standalone document but appends to and supplements the information contained in the base plan document. As such, all sections of the base plan, including the planning process and other procedural requirements apply to and were met by the Town. This Annex provides additional information specific to the Town of Yountville, with a focus on providing additional details on the planning process, risk assessment, and mitigation strategy for this community.

Hazard Mitigation Plan Point of Contact

Primary Point of Contact

Steven Rogers, Town Manager
Town of Yountville
6550 Yount Street
Yountville, CA 94599
Telephone: 707-944-8851
e-mail Address: srogers@yville.com

Alternate Point of Contact

Joe Tagliaboschi, Public Works Director
Town Of Yountville
6550 Yount Street
Yountville, CA 94599
Telephone: 707-944-8851
e-mail Address: jtagliaboschi@yville.com

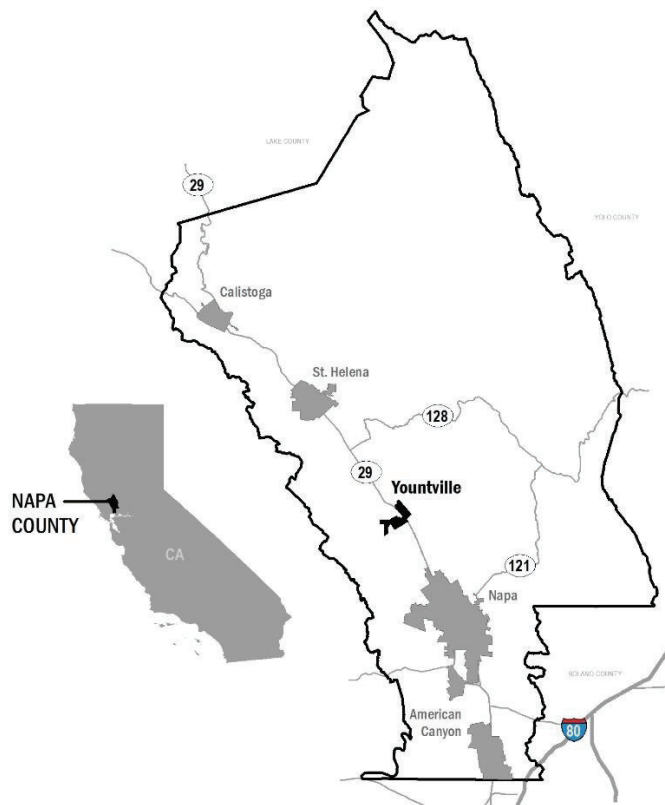


Figure 4-1: Town of Yountville Location



4.2 Planning Methodology

The Town of Yountville followed the planning process detailed in Volume 1, Section 3 of the base plan. In addition to providing representation on the Napa County Hazard Mitigation Planning Committee (HMPC) and Steering Committee, the Town formulated their own internal planning team to support the broader planning process requirements. Internal planning participants, their positions, and how they participated in the planning process are shown in Table 4-1

Table 4-1: Yountville Planning Committee Members

Planning Committee Members	Department
Eddy Gomez	Town Manager's Office
Erica Teagarden	Finance Department
Joe Tagliaboschi	Public Works Department
John Ferons	Public Works Department
Samantha Holland	Parks & Recreation Department
Sandra Liston	Planning and Building Department
Steven Rogers	Town Manger's Office

4.2.1 What's New

The Town of Yountville has been making improvements toward reducing natural hazard risks to life and property within the Town since the 2013 MJHMP was adopted. Mitigation actions develop from the 2013 MJHMP for the Town have been edited, consolidated and developed to meet new priorities. See Vol. 1 for listing of historic mitigation actions. Listed below are success stories where the Town of Yountville successfully implemented mitigation actions that were defined in the 2013 MJHMP.

4.3 Risk Assessment

The intent of this section is to profile the Town of Yountville's hazards and assess the Town's vulnerability distinct from that of the County wide planning area, which has already been assessed in Vol. 1, Section 4 (Risk Assessment). The hazard profiles in Vol. 1 discuss overall impacts to the planning area and describes the hazard problem description, hazard extent, magnitude/severity, previous occurrences of hazard events and the likelihood of future occurrences. Hazard vulnerability specific to the Town of Yountville is included in this Annex. For more information on Risk Assessment Methodologies see Vol. 1 and Appendix A.



4.3.1 Hazard Screening Criteria

Planning Team members from each participating jurisdiction collectively discussed which hazards should be profiled in the plan and which should not. The results of that discussion can be found in Table 4-2. Detailed hazard profiles of the most significant County-wide hazards are described in Section 4 of Vol. 1. The Town of Yountville Planning Team reviewed previously-prepared hazard mitigation plans and other relevant documents to determine the realm of natural hazards that have the potential to affect Yountville. Table 4-3 provides a crosswalk of hazards identified in Vol. 1 of this plan, Yountville General Plan, 2010 San Francisco Bay Area Hazard Mitigation Plan, and 2018 California State Hazard Mitigation Plan. Sixteen different hazards were identified based on a thorough document review. The crosswalk was used to develop a preliminary hazards list, providing a framework for the Planning Team members to evaluate which hazards were truly relevant to Yountville and which ones were not. Section 4.3.2 below describes the hazard risk ranking process that was performed by the Yountville Planning Team which prioritized hazards that are specifically relevant to Yountville.

Table 4-2 Hazard Prioritization

Hazard Type	Explanation
Climate Change	High priority county-wide, profiled hazard.
Dam failure	High priority county-wide, profiled with flood hazard.
Drought	High priority county-wide, profiled hazard
Earthquake/ Geologic Hazards	High priority county-wide, profiled hazard
Extreme Heat	Profiled as part of Severe Weather hazard
Extreme Cold	Profiled as part of Severe Weather hazard
Flood	High priority county-wide, profiled hazard
Hail	Profiled as part of Severe Weather hazard
Hazardous Material	While hazardous materials can release and impact the County, there are better avenues to address this hazard outside this Plan.
High Winds/ Straight Line Winds	High priority county-wide, profiled as part of Wildfire and Severe Weather hazards
Infestation	High priority county-wide, profiled as part of Ag Disaster hazard
Lightning	Profiled as part of Severe Weather hazard
Pandemic Disease	High priority county-wide, profiled hazard.
Severe Thunderstorm	Profiled as part of Severe Weather hazard.
Slope Failure	High priority county-wide, profiled hazard



Hazard Type	Explanation
Terrorism/Human Caused Threats	While terrorism is certainly a threat to the County and participating jurisdictions, it is best addressed in other plans as this HMP does not address human caused threats.
Tornado	Impacts to the County from tornados are extremely unlikely, if any.
Volcanic Activity	Due to distance from volcanoes and the limited chance of an eruption, this hazard was not identified as a priority.
Wildfire	High priority county-wide, profiled hazard
Winter Storm	Profiled as part of Severe Weather hazard

Table 4-3 Document Review Crosswalk

Hazards	Napa County Operational Area HMP (Vol. 1)	Yountville General Plan	2010 San Francisco Bay Area HMP	2018 California State HMP
Agricultural Pests	■			■
Climate Change	■	■	■	■
Dam Failure	■	■	■	■
Drought	■	■	■	■
Earthquake	■	■	■	■
Flood	■	■	■	■
Landslide	■	■	■	■
Levee Failure	■		■	■
Manmade Hazards				■
Pandemic Disease				■
Sea Level Rise	■	■		■
Severe Weather	■			■
Terrorism & Tech Hazards		■		■
Tsunami		■	■	■
Volcano				■
Wildfire	■	■	■	■



4.3.2 Hazard Risk Ranking

The Town of Yountville's Planning Team used the same hazard prioritization process as the Napa County Planning Committee. This process is described in detail in Section 4.3.1 of Vol. 1. Figure 4-2 displays the results of the hazard risk ranking exercise that was performed by the Planning Team. The Planning Team chose to assess Yountville's vulnerability to following hazards: climate change, drought, earthquake, flood, wildfire, and dam failure. All of these hazards have been profiled in Vol. 1 of this document. The purpose of this annex is to specifically address Yountville's vulnerability to the previously mentioned hazards, which the Planning Team identified as presenting the most significant threat to the Town of Yountville.



Risk Assessment Matrix Definitions

PROBABILITY RATING

The likelihood of a hazard event occurring within a time period?

PROBABILITY	Highly Likely	Highly likely - 100% annual probability. Or Likely to occur every year in your lifetime.
	Likely	Likely - between 10 & 100% annual probability. Or will occur several times in your lifetime.
	Possible	Possible - between 1 & 10% annual probability. Or Likely to occur some time in your lifetime.
	Unlikely	Unlikely - less than 1% annual probability. Or unlikely but possible to occur in your lifetime.

IMPACT RATING

In terms of injuries, damage, or death, would you anticipate impacts to be minor, limited, critical, or catastrophic when a significant hazard event occurs? The impact could be in terms of one hazard event (flooding from a culvert failure) or a large-scale event (multiple rivers flooding) in the same jurisdictional boundary.

IMPACT			
Minor	Limited	Critical	Catastrophic

Minor - very few injuries, if any. Only minor property damage & minimal disruption on quality of life. Temporary shutdown of critical facilities.

Limited - minor injuries only. Approx. 10% or less of property in disaster footprint damaged or destroyed. Complete shutdown of critical facilities for more than one day.

Critical - multiple deaths/injuries possible. Between 25% and 50% of property in disaster footprint is damaged or destroyed. Complete shutdown of critical facilities for more than one week.

Catastrophic - high number of deaths/injuries possible. More than 50% of property in affected area damaged or destroyed. Complete shutdown of critical facilities for 30 days or more.

Drag & Drop each hazard symbol below into the appropriate spot on the hazard prioritization table to the right.

-AG Disaster and Pandemic Disease were added later by PM Team and not analyzed by larger stakeholder groups. Placed by Consultant

-Tsunami and Volcano will not be addressed in the HMP due to the minor and limited impacts and low probability.

-High Heat and High Wind Will Be Addressed in Severe Weather Hazard Profiles and or Climate Change

-Levee Failure will be addressed under the Flood Hazard Profile

-Will be addressed in Climate Change Section.

County and Municipal governments will be required to address climate change impacts in the Safety Element their General Plans. Climate change may change the frequency, duration and intensity of hazards listed above.

PROBABILITY	IMPACT			
	Minor	Limited	Critical	Catastrophic
	FLOOD SEVERE WEATHER DROUGHT CLIMATE CHANGE EARTHQUAKE	DROUGHT CLIMATE CHANGE EARTHQUAKE	CLIMATE CHANGE EARTHQUAKE	EARTHQUAKE
	Medium	High	High	Extreme
	Low	Medium	WILDFIRE DAM FAILURE	DAM FAILURE
	LANDSLIDE	Low	Medium	Medium

Figure 4-2 Yountville Risk Assessment Matrix



4.3.3 Vulnerability Assessment

Assessing vulnerabilities exposes the unique characteristics of individual hazards and begins the process of narrowing down which areas within the Town of Yountville are vulnerable to specific hazard events. The vulnerability assessment included field visits and a GIS overlaying method for examining such vulnerabilities more in depth. Using these methods, participating jurisdictions estimated vulnerable populations, infrastructure, and potential losses from hazards.

4.3.3.1 Web Based Risk Assessment Mapping and Analysis

The web based and interactive Risk Assessment Mapping Platform (RAMP), accessed via the project website at www.mitigatehazards.com, allows interactive discovery of robust risk, vulnerability, and exposure data developed especially for Napa County. RAMP is a mapping platform built specifically for mitigation planning. It displays County/jurisdiction facilities and buildings overlaid with natural hazards layers to bring interactivity and individual discovery to the GIS analysis performed for the MJHMP. See Vol. 1 for a detailed description of RAMP.

The Planning Team used RAMP in meetings and as needed to understand vulnerabilities to the Town of Yountville. Users interactively filter facilities and buildings by natural hazard zones and/or construction characteristics.

4.3.3.2 Snapshot Exposure Maps

Static snapshot maps were developed to display Yountville's vulnerability to specific hazards. These maps were available on the project website and helped the Planning Team understand the exposure of population, parcels, and critical infrastructure to specific hazards. Each map contains an exposure summary that displays the percent of the population, the improvement and content value of parcels, and the amount of critical infrastructure that is exposed to each respective hazard. The snapshot maps for the hazards that the Yountville Planning Team prioritized are displayed below in Figure 4-3 through Figure 4-8.

4.3.3.3 Future Development

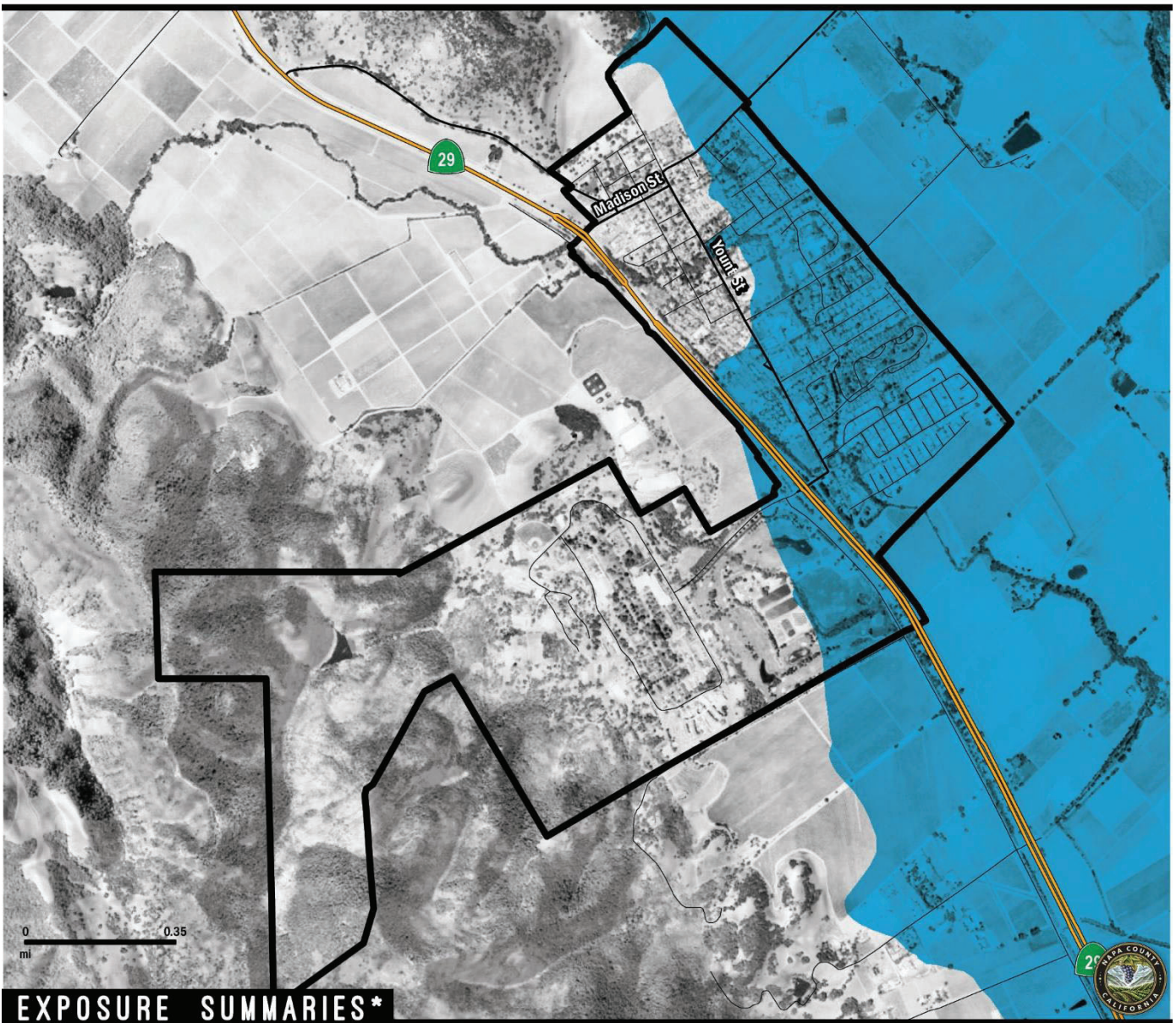
The Town of Yountville is a General Law City that runs by State rules as outlined in the California Government Code. Future development in Yountville is subject to compliance with State of California planning, zoning, subdivision, and architecture laws.

The Town of Yountville has experienced minimal development since the 2004 Napa County HMP. Annexation has not occurred since 2004, and there is no anticipated future development via annexation. Development that has occurred since the previously approved (2004) HMP has been primarily residential and has occurred in small areas throughout the Town. (Napa Operational Area Hazard Mitigation Plan, 2013)



DAM INUNDATION EXPOSURE

YOUNTVILLE



EXPOSURE SUMMARIES*

POPULATION

COUNT	
1,760	65%

PARCEL

COUNT	
920	70%

PARCEL VALUE

IMPROVEMENT	
\$353,726,692	69%
CONTENT	
\$215,320,714	70%

CRITICAL INFRASTRUCTURE

COUNT		
Essential Facilities	3	75%
High Potential Loss	47	49%
Transportation & Lifeline	184	66%
	28	60%

MAP LEGEND

INUNDATION ZONE

*Exposure summaries include all dam inundation areas. Hazard data source: Napa County, CalOES.
(%) - Percent of respective category totals for jurisdiction.

Dynamic Planning + Science
for Napa County, 2018

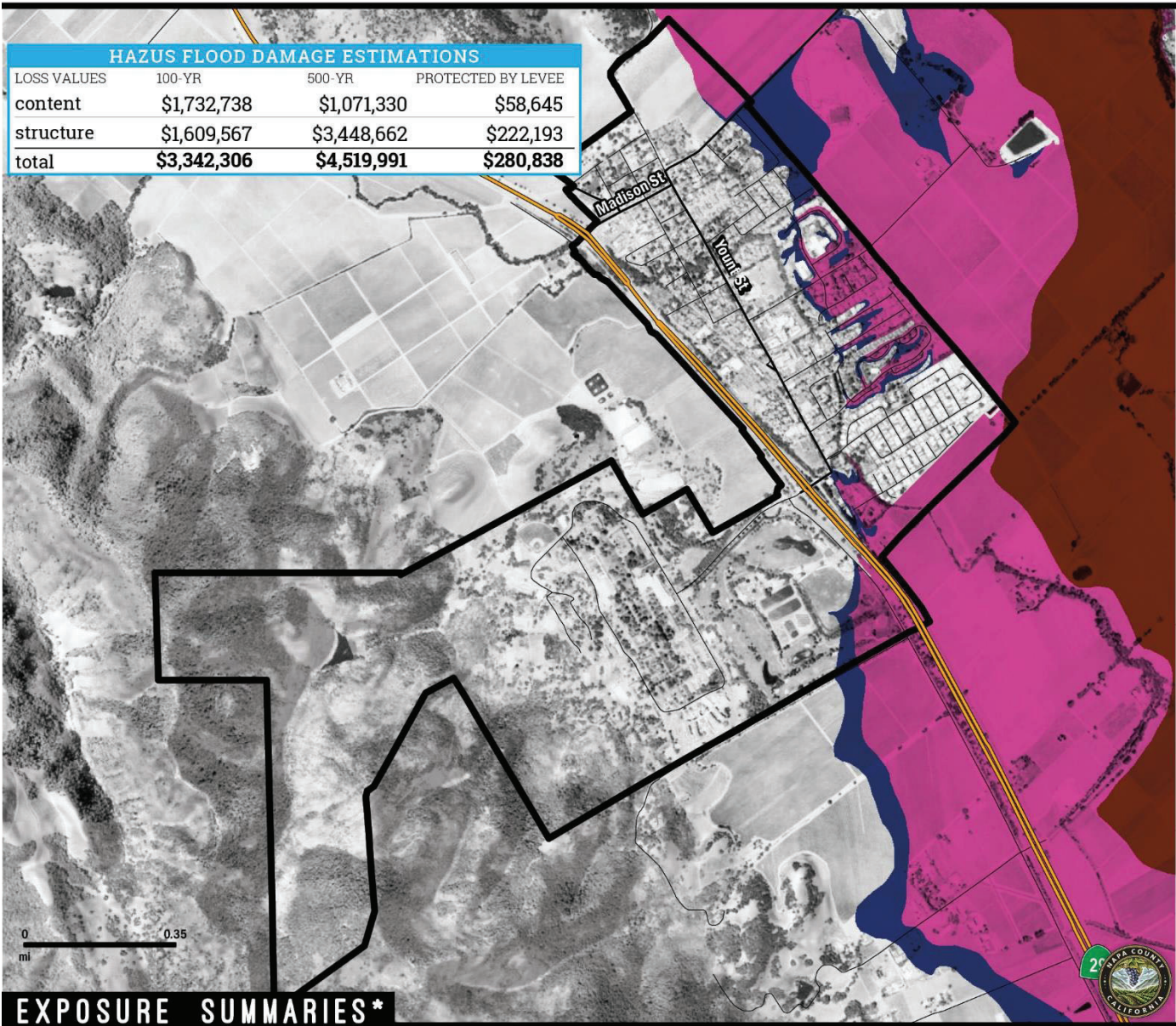


Figure 4-3 Dam Failure Exposure Summary



FEMA FLOOD ZONE EXPOSURE

YOUNTVILLE



EXPOSURE SUMMARIES*

POPULATION		PARCEL		PARCEL VALUE		CRITICAL INFRASTRUCTURE		
COUNT		COUNT		IMPROVEMENT		COUNT		
650	24%	210	16%	\$88,417,549	17%	Essential Facilities	0	0%
				CONTENT		High Potential Loss	4	4%
				\$56,343,733	18%	Transportation & Lifeline	79	28%
						LINEAR MILEAGE		
							9	20%

MAP LEGEND

100-YR 100-YR FLOOD WAY

500-YR

*Exposure summaries include 100-year and 500-year flood zone areas. Hazard data source: FEMA.
(%) - Percent of respective category totals for jurisdiction.

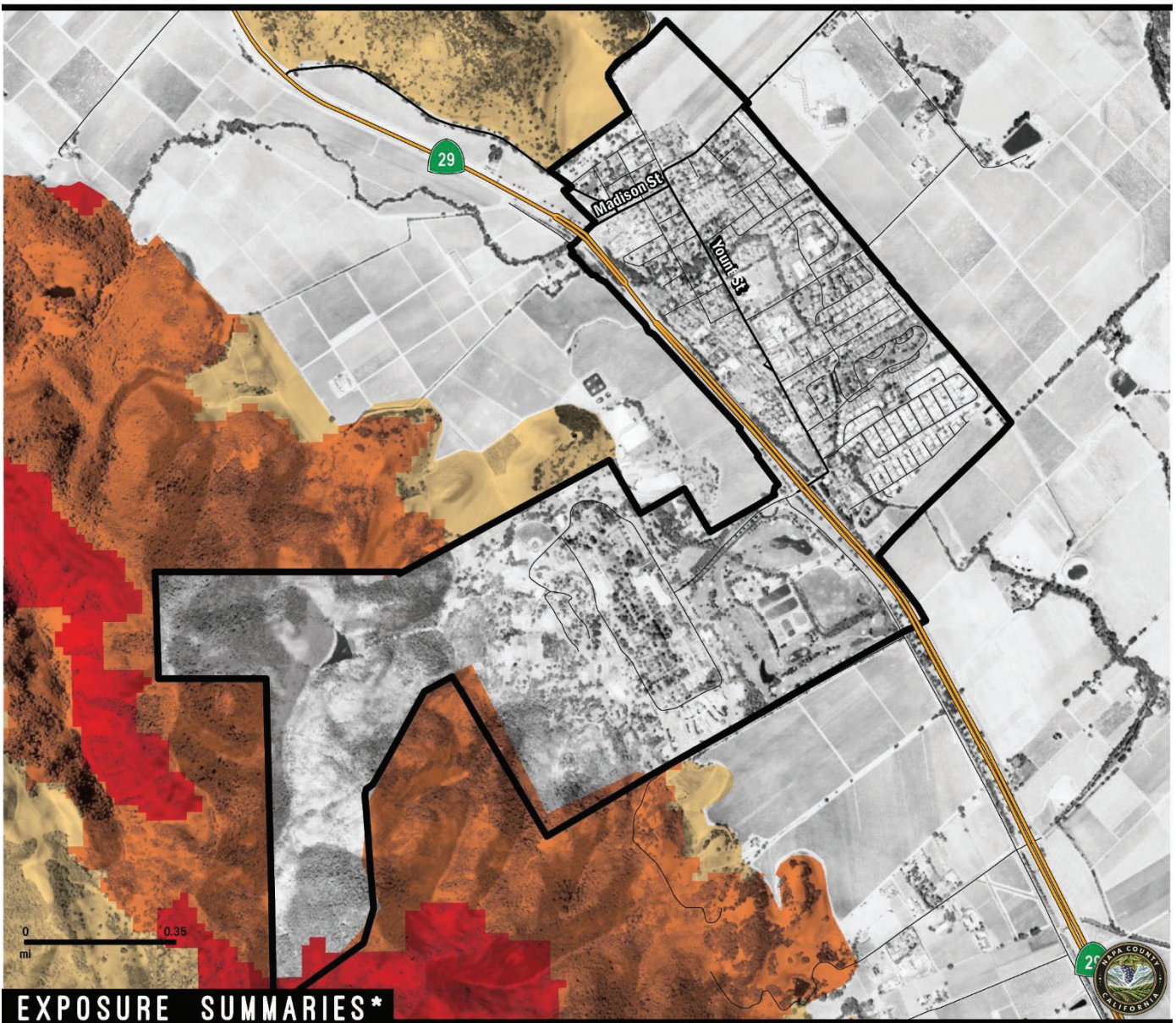
Dynamic Planning + Science
for Napa County, 2018

Figure 4-4 Flood Exposure Summary



FIRE RISK EXPOSURE

YOUNTVILLE



EXPOSURE SUMMARIES*

POPULATION		PARCEL		PARCEL VALUE		CRITICAL INFRASTRUCTURE		
COUNT		COUNT		IMPROVEMENT		COUNT		
27	1%	0	0%	\$0	0%	Essential Facilities	0	0%
				CONTENT		High Potential Loss	0	0%
				\$0	0%	Transportation & Lifeline	0	0%
						LINEAR MILEAGE		
							0	0%

MAP LEGEND

MODERATE
HIGH
VERY HIGH

*Exposure summaries include high and very high LRA and SRA zones. Hazard data source: Cal Fire Wildfire Hazard Severity Zone.
(%) - Percent of respective category totals for jurisdiction.

Dynamic Planning + Science
for Napa County, 2018

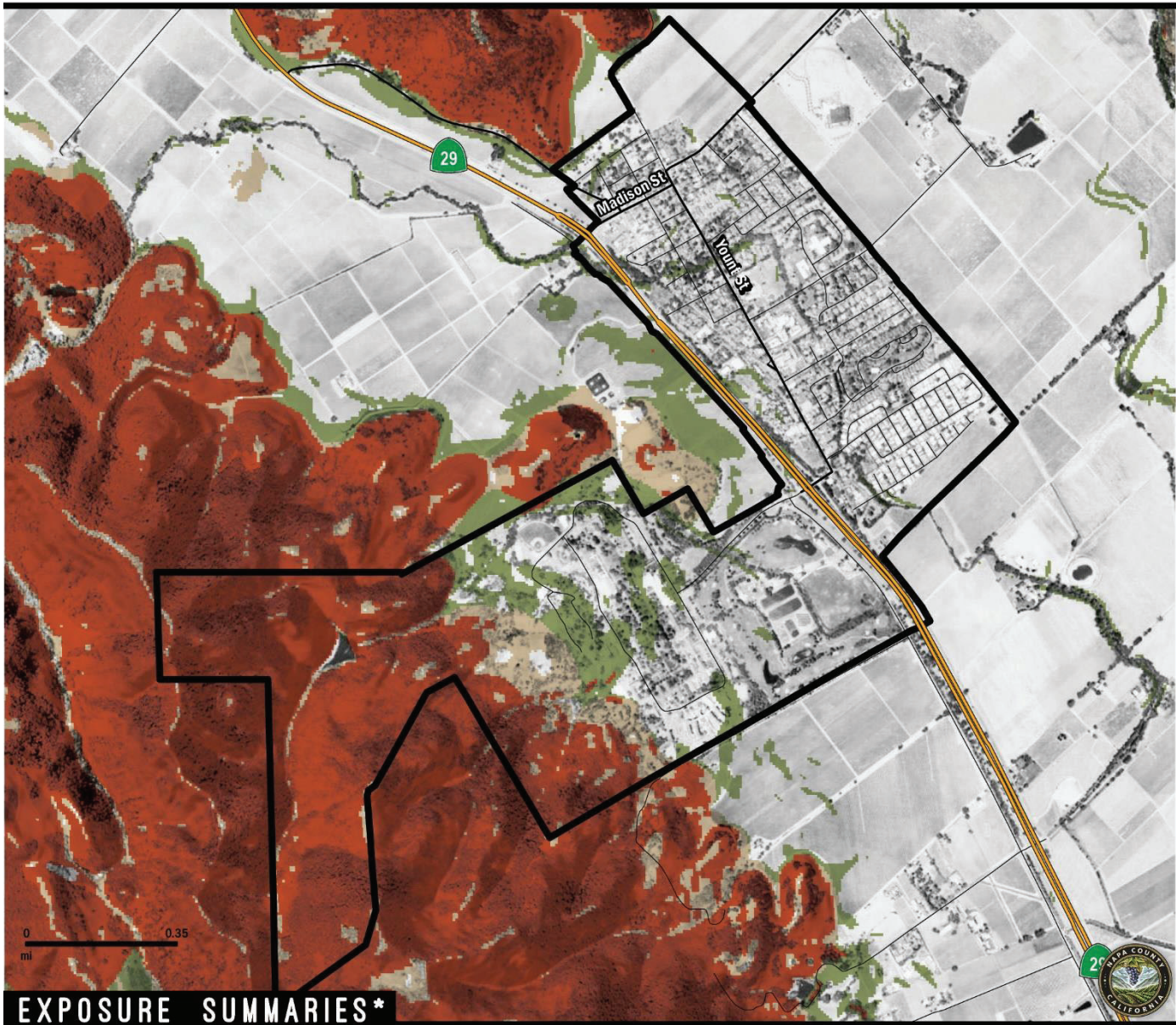


Figure 4-5 Wildfire Exposure Summary



HIGH LANDSLIDE RISK EXPOSURE

YOUNTVILLE



EXPOSURE SUMMARIES*

POPULATION

COUNT

200

7%

PARCEL

COUNT

9

1%

PARCEL VALUE

IMPROVEMENT

\$9

0%

CONTENT

\$9

0%

CRITICAL INFRASTRUCTURE

COUNT

Essential Facilities

0 0%

High Potential Loss

0 0%

Transportation & Lifeline

0 0%

LINEAR MILEAGE

0 0%

MAP LEGEND

LOW

MODERATE

HIGH

*Exposure summaries include high susceptibility only. Hazard data source: California Geological Survey.
(%) - Percent of respective category totals for jurisdiction.

Dynamic Planning + Science
for Napa County, 2018



Figure 4-6 Landslide Exposure Summary



M6.7 EQ SCENARIO EXPOSURE

YOUNTVILLE

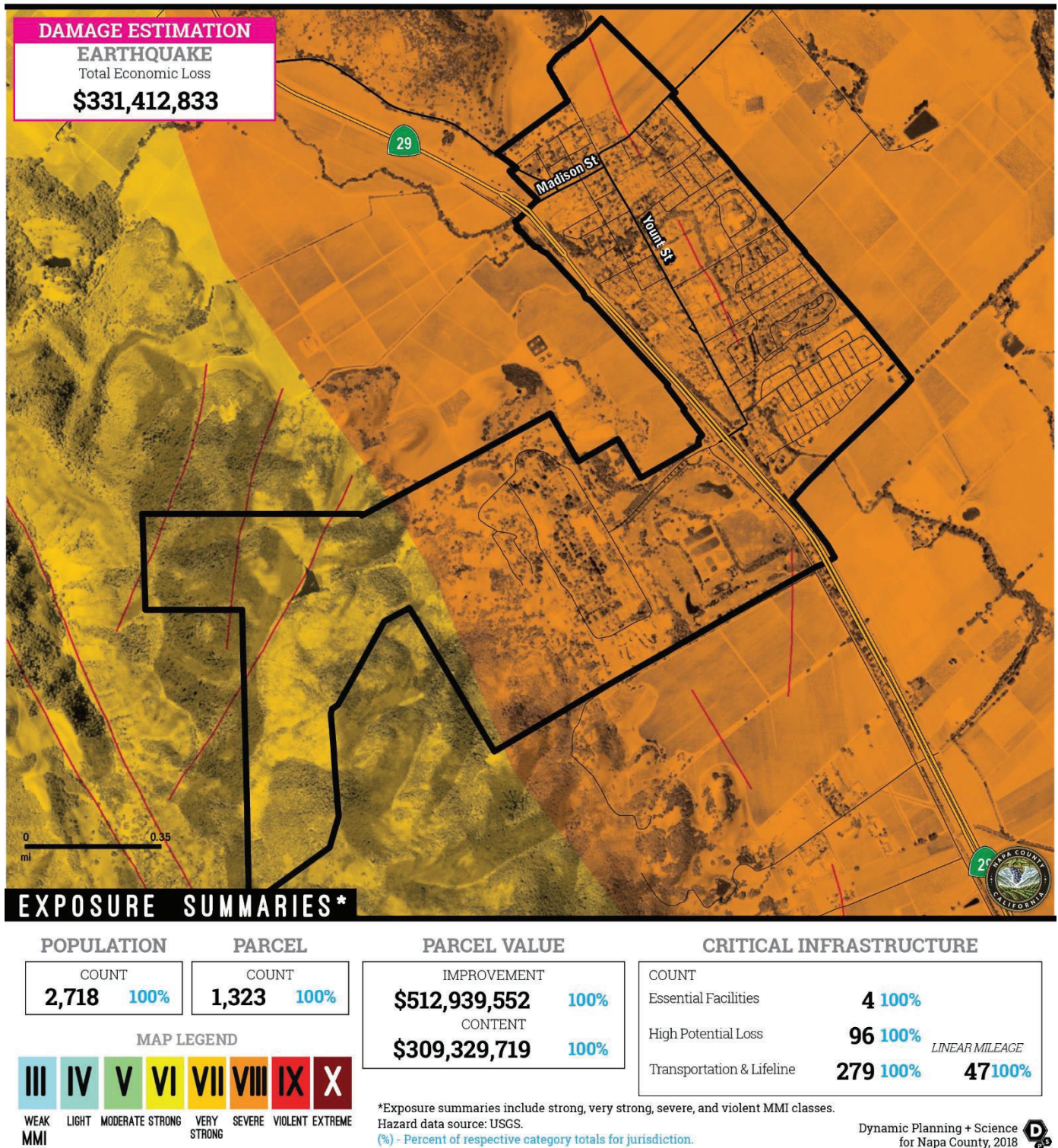
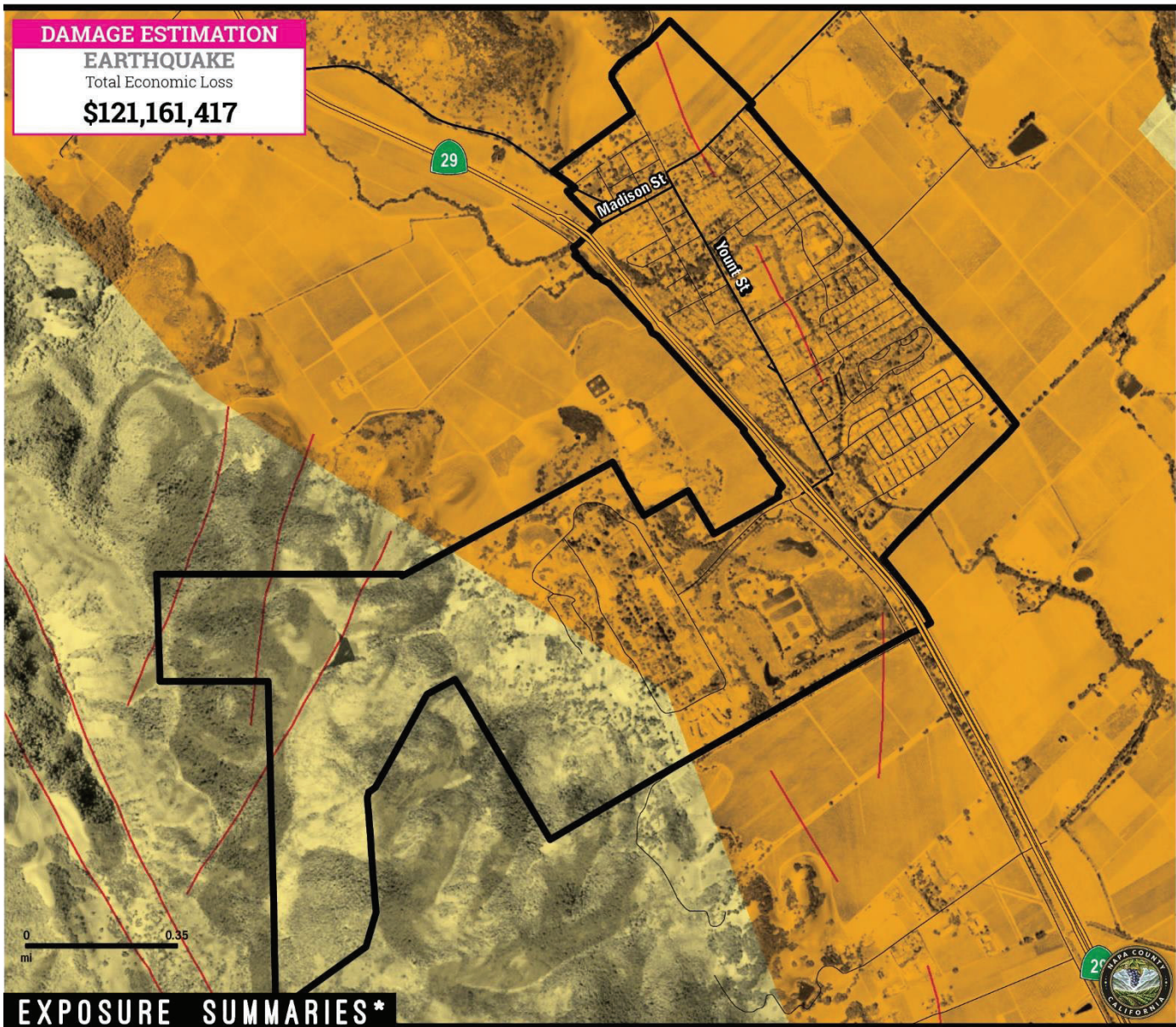


Figure 4-7 West Napa 6.7 Scenario Exposure Summary



PROBABILISTIC EQ EXPOSURE (PHSA)

YOUNTVILLE



EXPOSURE SUMMARIES*

POPULATION		PARCEL		PARCEL VALUE		CRITICAL INFRASTRUCTURE		
COUNT		COUNT		IMPROVEMENT		COUNT		
2,718 100%		1,323 100%		\$512,939,552 100%		Essential Facilities 4 100%		
				CONTENT		High Potential Loss 96 100%		
				\$309,329,719 100%		Transportation & Lifeline 279 100% 47 100% LINEAR MILEAGE		
MAP LEGEND								
III	IV	V	VI	VII	VIII	IX	X	
WEAK	LIGHT	MODERATE	STRONG	VERY	SEVERE	VIOLENT	EXTREME	
MMI				STRONG				

*Exposure summaries include strong, very strong, severe, and violent MMI classes.
Hazard data source: USGS.
(%) - Percent of respective category totals for jurisdiction.

Dynamic Planning + Science
for Napa County, 2018

Figure 4-8 50-Yr. Probabilistic Scenario Exposure Summary



4.3.3.4 Identify Hazard Problem Statements

The Planning Committee developed mitigation actions, as both planning activities and projects, to address problems that could originate from hazards identified in the risk assessment, in line with identified capability of each jurisdiction. Mitigation actions were created by identifying hazard problem statements. As a rule of thumb, each hazard problem statement should be mitigated with a combination of short-term and long-range planning activities, either through operational and or physical projects. Hazard Problem Statements are located at the conclusion of each hazard profile in table format and are also uploaded in an interactive web-based Mitigation Action Support Tool (MAST), described below. Hazard problem statements for the County and other participating jurisdictions are categorized as impact-related, victim-related, or threat-related.



IMPACT

Casualties
Property Damage
Business Interruption
Financial Loss
Environmental Contamination



VICTIM

School Children in Hazard High Hazard Areas
Care Facilities in High Hazard Area
Vulnerable Population Exposed to hazards



THREAT

Increased Fuels due to drought
Hotter, drier climates
More Intense Storms
Impervious surfaces = greater runoff
Increases of Invasive Species

As part of the mitigation action identification process, the Planning Committee for each jurisdiction identified issues and weaknesses (aka problem statements) for their respective facilities based on the risk assessment and vulnerability analysis, utilizing the RAMP mapping and static snapshot maps. Problem statements developed by the Yountville Planning Committee are listed in Table 4-4.

Identifying these common issues and weaknesses assists the Planning Committee in understand the realm of resources needed for mitigation. The goal is to have at least one mitigation action for every problem statement. Projects or actions have been developed to mitigate each problem identified. See Table 4-10 for a full list of mitigation actions and corresponding problem statements that they address. Each problem statement is coded with a problem number for cross-referencing between Table 4-4 and Table 4-10.



Table 4-4 Yountville Problem Statements

Problem No.	Hazard	Area of Concern	Mitigation Alternatives	Primary	Problem Description	Related MA
CC-12	Climate Change	Victim	PE&A - Public Education & Awareness	Yountville	Climate change is expected to bring changing and extreme weather and more frequent and intense extreme heat days and longer heat waves. In Yountville, where there is already a large senior population that is expected to grow by nearly 60% by 2040, heat-related illness is of significant concern.	NC-25-2020, NC-26-2020
DF-19	Dam Failure	Victim	PE&A - Public Education & Awareness, ES - Emergency Services, PPRO - Property Protection	Yountville	Approx. 1,000 people are living in a floodplain or dam inundation zone (Rector Creek Dam).	NC-34-2020, NC-35-2020, NC-36-2020, YV-02-2020
DF-20	Dam Failure	Victim	SP - Structural Projects	Yountville	16 critical facilities are in a dam inundation zone (Rector Creek Dam) and 3 are in the 100-YR floodplain.	NC-34-2020, NC-35-2020, NC-36-2020, YV-02-2020
DR-03	Drought	Impact	NRP - Natural Resource Protection, PE&A - Public Education & Awareness	Yountville	There may not be adequate water supplies for residents as wildfires become more frequent as a result of drought.	YV-01-2020
EQ-17	Earthquake	Victim	SP - Structural Projects, PRV - Prevention, PE&A - Public Education & Awareness	Yountville	Most of Town of Yountville critical infrastructure (38 of 39) is in a severe earthquake probability zone.	NC-09-2013, YV-06-2020
EQ-18	Earthquake	Threat	PPRO - Property Protection, PRV - Prevention, SP - Structural Projects	Yountville	Approximately all of the Town of Yountville's improved parcels (about \$300 million in content value) are in a severe earthquake probability zone.	YV-06-2020
EQ-19	Earthquake	Victim	PE&A - Public Education & Awareness, PPRO - Property Protection, PRV - Prevention, SP - Structural Projects	Yountville	2,400 people live in a severe earthquake probability zone and 287 live in a very strong earthquake probability zone in the Town of Yountville.	YV-06-2020



Problem No.	Hazard	Area of Concern	Mitigation Alternatives	Primary	Problem Description	Related MA
FL-18	Flood	Victim	PPRO - Property Protection , SP - Structural Projects , PRV - Prevention	Yountville	There are 102 parcels in the 100-YR floodplain, 414 in the 500-YR floodplain and 921 in a dam inundation zone (Rector Creek Dam) equaling over \$57 million in content value.	NC-34-2020, NC-35-2020, NC-36-2020, YV-07-2020, YV-08-2020
FL-21	Flood	Victim	PE&A - Public Education & Awareness	Yountville	During heavy rain, Yountville is subject to flooding problems along the natural creeks and drainage that traverse the area. Notes from PC Meeting #2- Improvements to Hopper Creek Drainage and Modifications to capacity at Beard Ditch needed. Coordinate improvements w/ County.	YV-04-2020
FL-22	Flood	Victim	PRV - Prevention , PPRO - Property Protection	Yountville	Yountville has one repetitive loss property located on 2 Talent Lane with two losses and total paid claims of \$23,457.66.	YV-03-2020
WF-24	Wildfire	Victim	PE&A - Public Education & Awareness , PPRO - Property Protection , ES - Emergency Services	Yountville	There are 22 people living off of Imperial Rd (Veterans Home) that are in a high wildfire intensity zone.	NC-02-2020, NC-03-2020, YV-05-2020
WF-25	Wildfire	Impact	PE&A - Public Education & Awareness , ES - Emergency Services	Yountville	Heavy smoke from wildfires or prescribed burns may result in poor air quality in Yountville. Residents with respiratory concerns are particularly vulnerable.	YV-05-2020

4.4 Mitigation Strategy

The mitigation strategy is the guidebook to future hazard mitigation administration for the County and all other participating jurisdictions, capturing the key outcomes of the MJHMP planning process. The mitigation strategy is intended to reduce vulnerabilities outlined in the previous section with a prescription of policies and physical projects. These mitigation actions should be compatible with existing planning mechanisms and should outline specific roles and resources for implementation success. The Planning Committee conducted the hazard mitigation planning process through a typical problem-solving methodology, as did the Steering Committees for each participating jurisdiction :

Based upon the Town's Planning Committee priorities, risk assessment results, and mitigation alternatives, mitigation actions were developed. The Yountville Planning Team used the same mitigation action prioritization method as described in Section 5.5.1 of Volume 1. Based upon the Planning Committee consensus, Table 4-10 lists each priority mitigation action, identifies the



responsible party, time frame, potential funding source, implementation steps and resources need to implementation, which meet the requirements of FEMA and DMA 2000.

4.4.1 Capabilities Assessment

The mitigation strategy includes an assessment of the City's planning and regulatory, administrative and technical, financial, and education and outreach capabilities to augment known issues and weaknesses from identified natural hazards.

4.4.1.1 National Flood Insurance Program (NFIP)

The Town of Yountville has participated in the NFIP since 1980. See Table 4-5 for more information on the Town's policies and historic flood insurance claims. Yountville is currently in good standing with the provisions of the NFIP. Compliance is monitored by FEMA regional staff and by the California Department of Water Resources under a contract with FEMA. Maintaining compliance under the NFIP is an important component of flood risk reduction. See Volume 1 for general information on the NFIP.

Table 4-5: Yountville NFIP Status Table

NFIP Status	Participating since 3/28/1980
Policies in Force	55
Policies in SFHA	31
Policies in non-SFHA	24
Total Claims Paid	23
Paid Losses	\$ 132,927
Repetitive Loss Properties	2
Severe Repetitive Loss Properties	N/A
Repetitive Loss Payment by NFIP on Building	\$ 23,457.66
Repetitive Loss Payment by NFIP on Contents	\$ 0

The Town of Yountville will maintain NFIP compliance by continuing to enforce Title 15 Division 2 (Floodplain Management Regulations) of the Yountville Municipal Code. Chapter 15.52 contains provisions for flood hazard reduction, including preventing new construction in Zones A1-30 and AE, unless it is demonstrated that the cumulative effect of the proposed development, when combined with all other development, will not increase the water surface elevation of the base flood more than one foot at any point within the Town of Yountville.

See Volume 1, Section 9.2.1 for more information on the NFIP.



4.4.1.2 Planning and Regulatory Mitigation Capabilities

The information in **Table 4-6** is used to construct mitigation actions aligned with existing planning and regulatory capabilities of the Town. Planning and regulatory tools typically used by local jurisdictions to implement hazard mitigation activities are building codes, zoning regulations, floodplain management policies, and other municipal planning documents.

Table 4-6: Yountville Planning and Regulatory Mitigation Capabilities

Plan/ Program/ Regulation	
Building Codes	Yes
Building Codes Year	Yes
BCEGS Rating	
Public Protection (ISO Class)	Yes
Capital Improvements Program (CIP) or Plan	Yes
Community Rating System (CRS)	Yes
Community Wildfire Protection Plan (CWPP)	No
Comprehensive, Master, or General Plan	Yes
Economic Development Plan	No
Elevation Certificates	Yes
Erosion/Sediment Control Program	Yes
Floodplain Management Plan	Yes
Flood Insurance Study	Yes
Growth Management Ordinance	Yes- Built out
Hazard-Specific Ordinance or Plan (Floodplain, Steep Slope, Wildfire)	Yes
NFIP	Yes
Site Plan Review Requirements	Yes
Stormwater Program, Plan or Ordinance	Yes
Zoning Ordinance	Yes



4.4.1.3 Administrative and Technical Capabilities

Table 4-7 shows the administrative and technical capabilities of Yountville.

Table 4-7: Yountville Administrative and Technical Capabilities

Administrative/ Technical Resource	
Emergency Manager	Yes
Floodplain Administrator	Yes
Community Planning:	
- Planner/Engineer (Land Development)	Yes
- Planner/Engineer/Scientist (Natural Hazards)	No
- Engineer/Professional (Construction)	Yes
- Resiliency Planner	No
- Transportation Planner	No
Full-Time Building Official	No- P/T
GIS Specialist and Capability	Yes
Grant Manager, Writer, or Specialist	P/T
Warning Systems/Services:	
- General	Yes
- Flood	Yes
- Wildfire	Yes
- Geological Hazards	Yes

4.4.1.4 Financial Capabilities

Table 4-8 identifies the financial tools or resources that the Town has used to fund mitigation activities.

Table 4-8: Yountville Fiscal Capabilities Summary

Financial Resource	
Has the community used any of the following to fund mitigation activities?	
- Levy for Specific Purposes with Voter Approval	Yes
- Utilities Fees	Yes
- System Development Fee	No
- General Obligation Bonds to Incur Debt	Yes
- Special Tax Bonds to Incur Debt	Yes, certificates of participation
- Withheld Spending in Hazard-Prone Areas	No
- Stormwater Service Fees	Yes
- Capital Improvement Project Funding	Yes
- Community Development Block Grants	Yes, when eligible



4.4.1.5 Education and Outreach

Table 4-9 lists the Town's education and outreach resources.

Table 4-9: Yountville Education/ Outreach Capabilities Summary

Education/ Outreach Resource	
Local Citizen Groups That Communicate Hazard Risks:	
- Fire Safe Councils	No
- Resource Conservation Districts	No
- Land Trusts	No
- Other	Updated website on emergency preparedness, CERT Teams

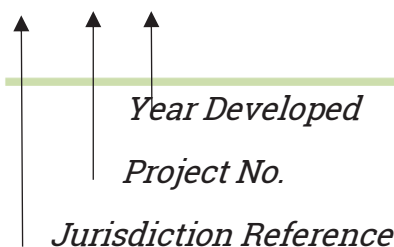
4.4.2 Mitigation Actions

During this MJHMP update process, each of the 2013 County-wide mitigation actions were examined for relevancy and the potential for future implementation and then evaluated for potential follow-up. Some mitigation actions developed during the 2013 HMP effort are an inherent part of the HMP update process or were not detailed enough for implementation at a local jurisdictional level, and thus were not included in this update. The Town of Yountville has made significant changes to other 2013 Mitigation Actions because of the updated risk assessment and implementation strategy, to include more detail, or to update based on current mitigation practices. Vol. 1 provides a record of 2013 County-wide Mitigation Actions, the status, and additional notes for each action.

Table 4-10 lists each mitigation action for Yountville. Each participating jurisdiction developed unique mitigation actions as well, targeted at their own unique priorities and vulnerabilities. Each mitigation action identifies the responsible party, time frame, potential funding

source, implementation steps and resources needed to implement these priority mitigation actions. As a living document, hazard problem statements and mitigation activities will be updated through MAST. The detail in Table 4-10 meets the regulatory requirements of FEMA and DMA 2000

NC-10-2020



Jurisdictions are identified by the following letters:

- AC- American Canyon
- CL- Calistoga
- NC- Napa County (unincorporated)
- HM- Howell Mountain MWC
- NCOE- Napa COE
- NFC- Napa Flood Control & Water District
- NVC- Napa Valley College
- SH- St. Helena
- VV- Yountville



INTENTIONAL BLANK PAGE



Table 4-10 Yountville Mitigation Actions

Mitigation No.	Hazard Type	Mitigation Type	Status	Primary	Description	Implementation Steps	Responsible Party	Time Frame	Estimated Capital Costs	Estimated Maintenance Costs	Potential Funding Sources	Priority	Related Problem Statements
YV-01-2020	Drought	PE&A - Public Education & Awareness	2020	Yountville	Increase engagement between the fire and drought communities.	Direct public to Emergency Preparedness website, hold Town emergency workshops	Town Staff and Public Safety	Ongoing	Unknown	Unknown	General Fund and grants if available	Medium	DR-03
YV-06-2020	Earthquake	PE&A - Public Education & Awareness	2020	Yountville	Earthquake month public education program	Variety of media and social media outreach	Town Staff and Public Safety	Annually	\$25,000	\$25,000	General Fund and grant funding if available	High	EQ-17, EQ-18, EQ-19
YV-02-2020	Flood	PE&A - Public Education & Awareness	2020	Yountville	Develop evacuation plans for communities and residents downstream from the Rector Creek Dam.	Conduct educational outreach and prepare evacuation routes	OES, Veterans Home/State, and Town Staff	Annually	\$25,000	\$25,000	General fund revenue and potential grant funding	High	DF-19, DF-20
YV-03-2020	Flood	PPRO - Property Protection	2020	Yountville	Identify properties that are potential candidates for elevation, relocation or buyout based on an evaluation of flood risks, project feasibility, and planned flood risk reduction capital projects.	Develop and execute flood protection project for at risk properties	Town Staff	Annually	TBD likely over \$12 million	\$25,000	General Fund and grant funding	High	FL-22
YV-04-2020	Flood	PPRO - Property Protection	2020	Yountville	Secure grant funding to develop and implement river restoration program that would reduce flood damages and increase environmental quality on the river, maintain fish habitat, decrease impediment to drainage by preventing silt build up and loss of stream bed capacity.	Prepare evaluation analysis	Town Staff and contracted consultants	5-10 Years	TBD	TBD	General fund and potential grant funding	Medium	FL-21
YV-07-2020	Flood	PRV - Prevention	2020	Yountville	Invest in flood prediction and forecast modeling to support all facets of the Napa County floodplain management program, including, but not limited to, flood hazard identification, flood threat recognition in support of flood notification programs, climate change adaptation, and risk assessment.	Analyze and install additional river flow monitors	Town Staff and contractors	5-10 Years	TBD	TBD	General Fund and grant funds	Low	FL-18
YV-08-2020	Flood	PE&A - Public Education & Awareness	2020	Yountville	Enhance the existing flood notification program to achieve real-time flood threat recognition capability.	Utilize variety of resources to achieve real-time flood threat recognition capability	Town Staff	3-5 Years	TBD	TBD	General Fund and grant funding	Medium	FL-18
YV-05-2020	Wildfire	PE&A - Public Education & Awareness	2020	Yountville	Work with local agencies to develop evacuation plans and provide education and outreach to populations vulnerable to wildfire.	Coordinate with public safety to develop evacuation plans and provide education and outreach to populations vulnerable to wildfire.	Town Staff, Public Safety, and Cal Veterans Home	Annually	\$25,000	\$25,000	Town General Fund and grant funding	High	WF-24, WF-25



INTENTIONAL BLANK PAGE