

Potential cannabis overlay zone locations by current zoning:

- Old Town Commercial (pink):
 - East of Washington Street
 - West of Washington Street
- Primary Commercial (red):
 - West of Washington Street
- Residential Scaled Commercial (yellow):
 - South of Mulberry Street
 - Within the triangle formed by Washington Street, Yount Street, and Humboldt Street
 - Rezoned parcel at Humboldt and Jefferson
- Public Facilities (blue):
 - Wine Train property, west of SR 29

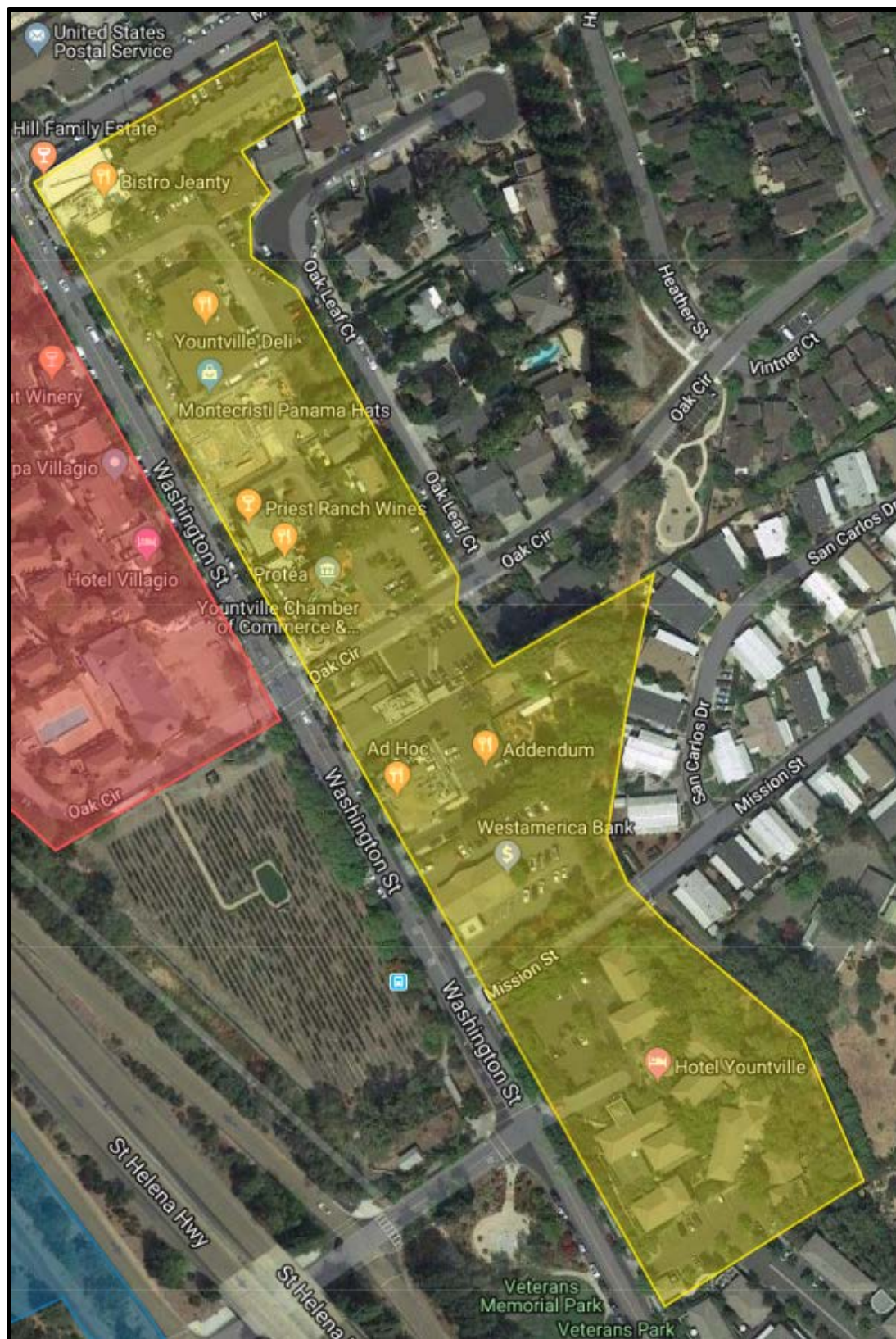


Detail 1: RSC in the triangle formed by Washington, Yount, and Humboldt

- + rezoned RSC parcel at Humboldt and Jefferson
- + PC formed by Bouchon within RSC triangle



Detail 2: Old Town Commercial



Detail 3: RSC south of Mulberry